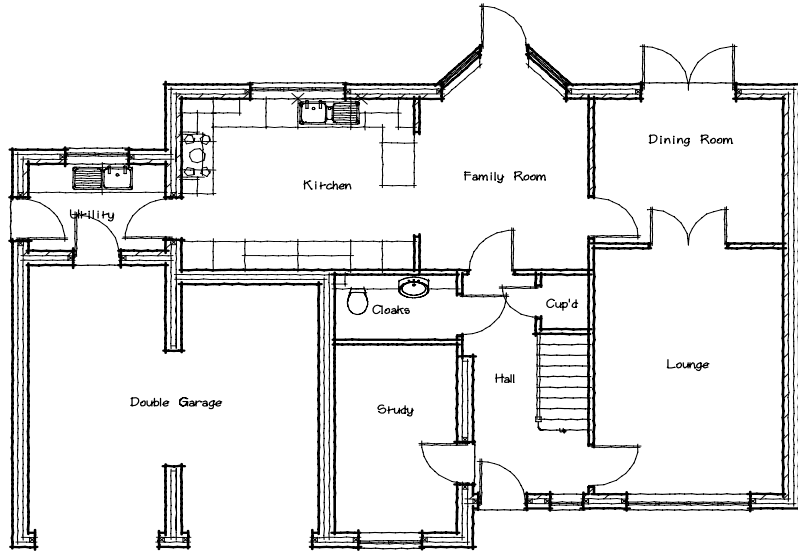




Avonbridge Close, off Howbeck Road,
Arnold, Nottinghamshire.



Avon Croft



The Pinehurst P2a/2002

Lounge	3.53 x 5.13 11'7" x 16'10"
Dining	3.53 x 3.00 11'7" x 9'10"
Kitchen	7.64 x 3.53 plus bay 25'1" x 11'7"
Study	2.26 x 3.91 7'5" x 12'10"
Garage	5.49 x 5.23 min 18'0" x 17'2"

Bed 1	5.18 x 4.77 max 17'0" x 15'8"
Bed 2	4.62 x 3.02 inc w'robe 15'2" x 9'11"
Bed 3	2.92 x 3.00 9'7" x 9'10"
Bed 4	3.58 x 2.20 min 11'9" x 7'2"
Bed 5	3.55 x 3.25 max 11'8" x 10'8"

All dimensions approximate

