

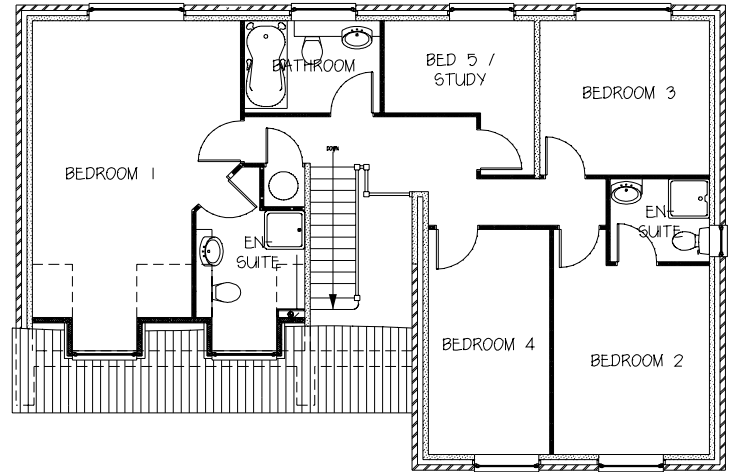
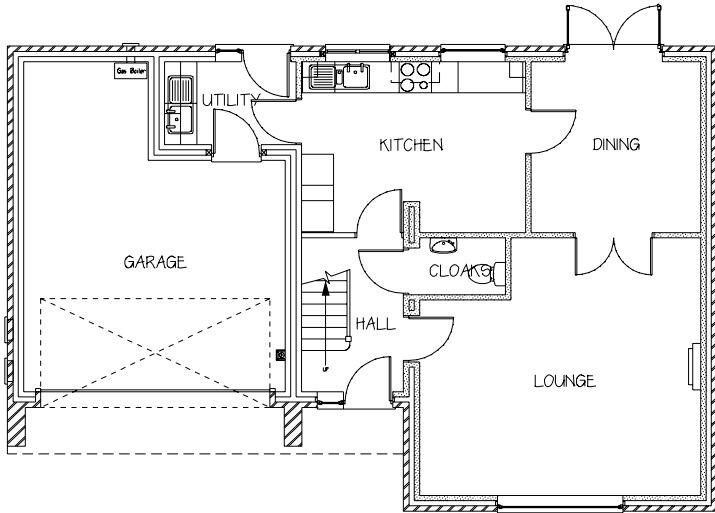


A development of new luxury 4 & 5 bed detached homes in a unique rural setting.



Wood View

The Maine M4



Lounge 5.18 x 4.92 max
17'0" x 16'2"
Dining 3.11 x 3.24
10'2" x 10'7"
Kitchen 4.12 x 3.24 max
14'6" x 10'7"
Garage 4.87 x 6.37 max
16'0" x 20'11"

Bed 1 3.85 x 5.68 max
12'7" x 18'7"
Bed 2 2.87 x 3.62 min
9'5" x 11'10"
Bed 3 3.13 x 2.95
10'3" x 9'8"
Bed 4 2.23 x 4.32
7'4" x 14'2"
Bed 5/Study 2.77 x 1.75 min
9'1" x 5'9"

All dimensions approximate

| Energy Efficiency Rating | | |
|--|-------------------------|-----------|
| | Current | Potential |
| <i>Very energy efficient - lower running costs</i> | | |
| (92-100) A | | |
| (81-91) B | | |
| (69-80) C | 78 | 78 |
| (55-68) D | | |
| (39-54) E | | |
| (21-38) F | | |
| (1-20) G | | |
| <i>Not energy efficient - higher running costs</i> | | |
| England & Wales | EU Directive 2002/91/EC | |

| Environmental (CO ₂) Impact Rating | | |
|---|-------------------------|-----------|
| | Current | Potential |
| <i>Very environmentally friendly - lower CO₂ emissions</i> | | |
| (92-100) A | | |
| (81-91) B | | |
| (69-80) C | 78 | 78 |
| (55-68) D | | |
| (39-54) E | | |
| (21-38) F | | |
| (1-20) G | | |
| <i>Not environmentally friendly - higher CO₂ emissions</i> | | |
| England & Wales | EU Directive 2002/91/EC | |

www.langridgehomes.com Tel 0115 9626 626

As part of a policy of continual development the company reserves the right to revise the plans and specification without prior notice.