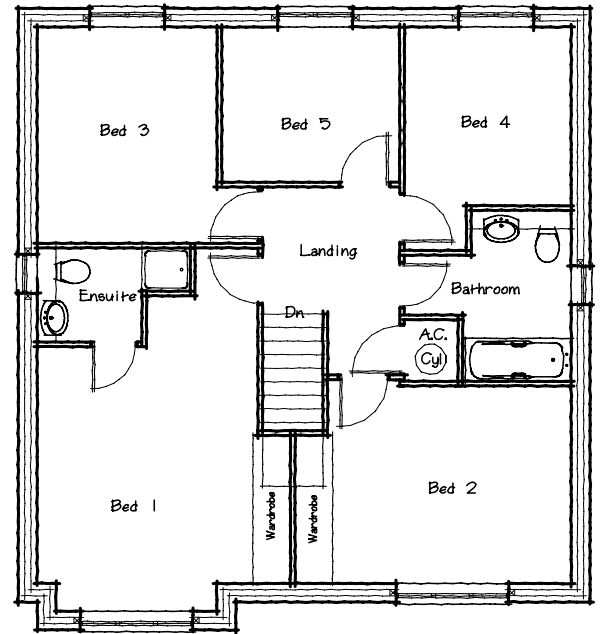
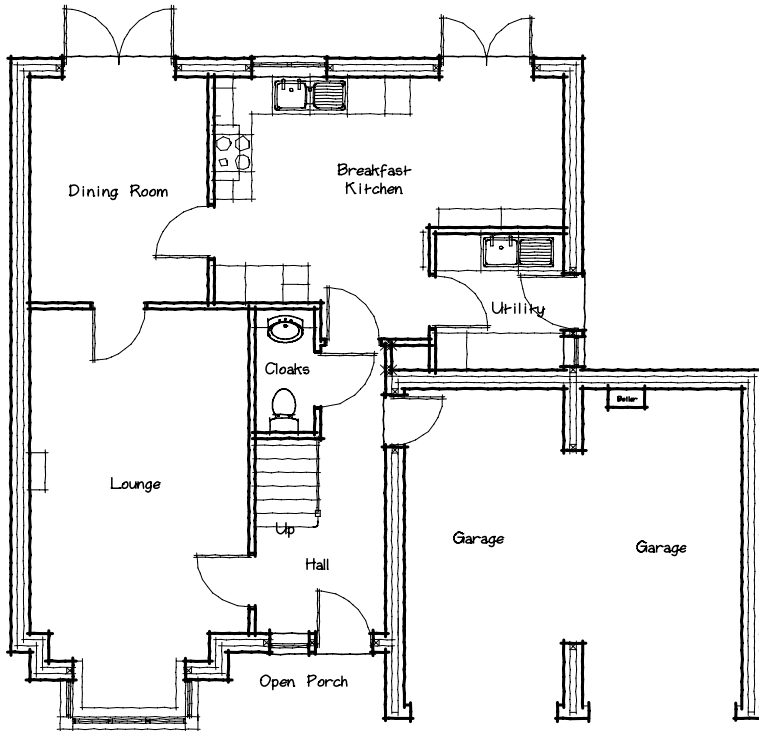


The Elmtree E16a/2006



- Lounge 3.45 x 5.20 min
11'4" x 17'1"
- Dining 2.80 x 3.60
9'2" x 11'10"
- Kitchen 5.53 x 3.60
18'2" x 11'10"
- Garage 5.37 x 5.03
17'7" x 16'6"

- Bed 1 4.02 x 4.98
13'2" x 16'4"
- Bed 2 4.39 x 3.17
14'4" x 10'5"
- Bed 3 2.85 x 3.48 min
9'4" x 11'5"
- Bed 4 2.64 x 2.87 min
8'8" x 9'5"
- Bed 5 2.82 x 2.49
9'3" x 8'2"

All dimensions approximate

Energy Efficiency Rating		Current	Potential
<i>Very energy efficient - lower running costs</i>			
(92-100) A			
(81-91) B			
(69-80) C		76	78
(55-68) D			
(39-54) E			
(21-38) F			
(1-20) G			
<i>Not energy efficient - higher running costs</i>			
England & Wales	EU Directive 2002/91/EC		

Environmental (CO ₂) Impact Rating		Current	Potential
<i>Very environmentally friendly - lower CO₂ emissions</i>			
(92-100) A			
(81-91) B			
(69-80) C		76	77
(55-68) D			
(39-54) E			
(21-38) F			
(1-20) G			
<i>Not environmentally friendly - higher CO₂ emissions</i>			
England & Wales	EU Directive 2002/91/EC		