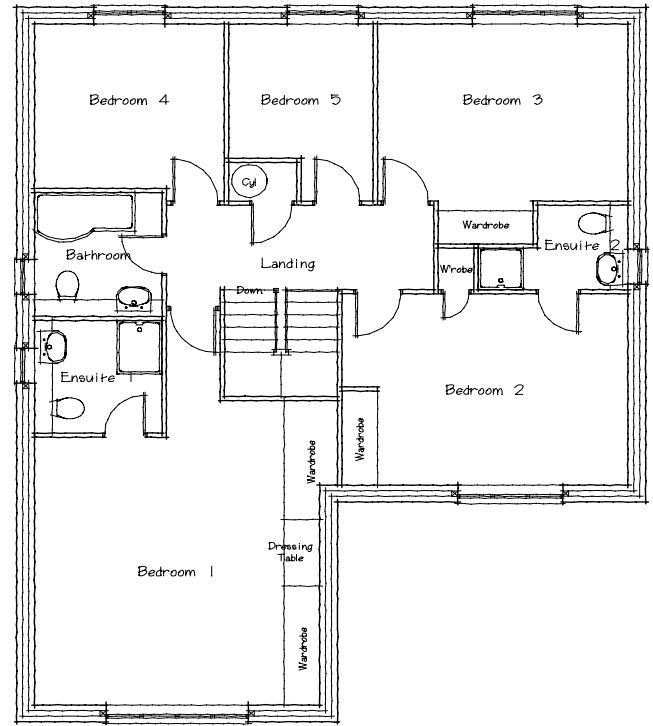
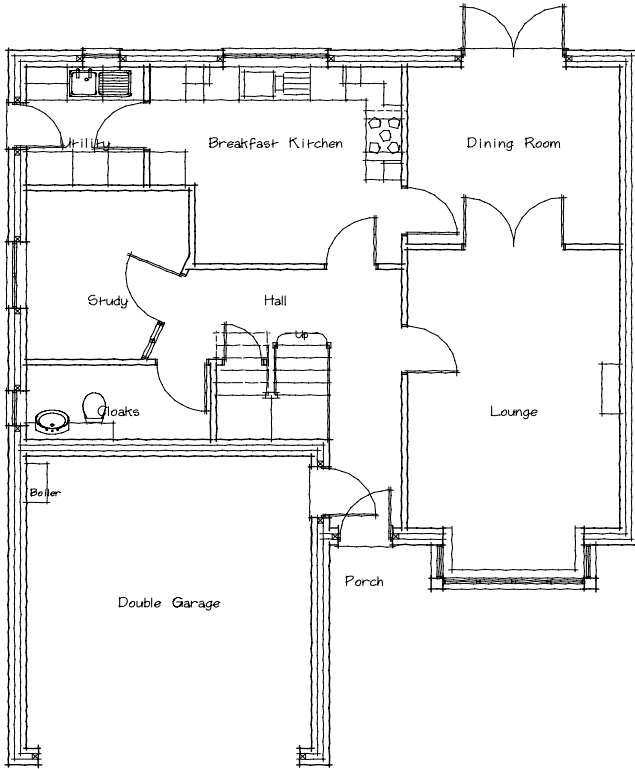


The Linden L2a/2002



| | |
|---------|---------------------------------------|
| Lounge | 3.67 x 4.98 plus bay 11'8" x 16'4" |
| Dining | 3.67 x 3.15 11'8" x 10'4" |
| Study | 2.69 x 3.02 8'10" x 9'11" |
| Kitchen | 4.19 x 3.52 13'9" x 11'6" |
| Garage | 4.72 x 5.11 8'2" x 16'9" |

| | |
|-------|---|
| Bed 1 | 4.79 x 5.54 inc w/robes 15'9" x 18'2" |
| Bed 2 | 4.82 x 3.41 inc w/robes 15'10" x 11'2" |
| Bed 3 | 4.19 x 3.16 ex w/robes 13'9" x 10'4" |
| Bed 4 | 3.16 x 2.94 min 10'4" x 9'7" |
| Bed 5 | 2.50 x 2.41 min 8'2" x 7'11" |

All dimensions approximate

| Energy Efficiency Rating | | Current | Potential |
|---|--|-------------------------|-----------|
| Very energy efficient - lower running costs | | | |
| (92-100) A | | | |
| (81-91) B | | | |
| (69-80) C | | 76 | 79 |
| (55-68) D | | | |
| (39-54) E | | | |
| (21-38) F | | | |
| (1-20) G | | | |
| Not energy efficient - higher running costs | | | |
| England & Wales | | EU Directive 2002/91/EC | |

| Environmental (CO ₂) Impact Rating | | Current | Potential |
|---|--|-------------------------|-----------|
| Very environmentally friendly - lower CO ₂ emissions | | | |
| (92-100) A | | | |
| (81-91) B | | | |
| (69-80) C | | 77 | 78 |
| (55-68) D | | | |
| (39-54) E | | | |
| (21-38) F | | | |
| (1-20) G | | | |
| Not environmentally friendly - higher CO ₂ emissions | | | |
| England & Wales | | EU Directive 2002/91/EC | |