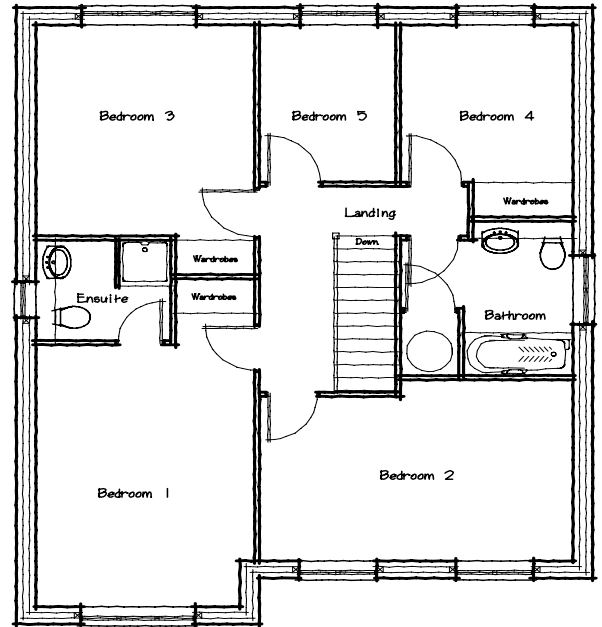
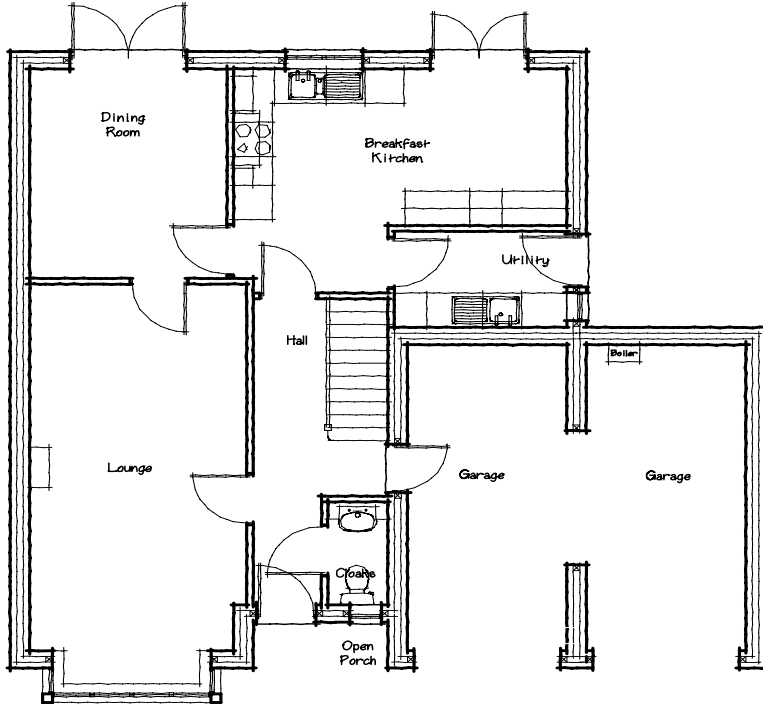


The Turnberry T13/2002



Lounge	3.30 x 6.35 exc bay 10'10" x 20'10"
Dining	2.99 x 3.60 9'10" x 11'10"
Kitchen	5.09 x 3.80 max 16'7" x 12'6"
Garage	5.22 x 5.34 17'1" x 17'6"

Bed 1	3.35 x 4.54 min 11'0" x 14'11"
Bed 2	4.81 x 3.17 max 15'9" x 10'5"
Bed 3	3.35 x 3.65 exc w'robe 11'0" x 12'0"
Bed 4	2.64 x 3.32 inc w'robe 8'8" x 10'11"
Bed 5	2.10 x 2.71 6'11" x 8'11"

All dimensions approximate

Energy Efficiency Rating		
	Current	Potential
Very energy efficient - lower running costs		
(92-100) A		
(81-91) B		
(69-80) C	76	78
(55-68) D		
(39-54) E		
(21-38) F		
(1-20) G		
Not energy efficient - higher running costs		
England & Wales	EU Directive 2002/91/EC	

Environmental (CO ₂) Impact Rating		
	Current	Potential
Very environmentally friendly - lower CO ₂ emissions		
(92-100) A		
(81-91) B		
(69-80) C	77	77
(55-68) D		
(39-54) E		
(21-38) F		
(1-20) G		
Not environmentally friendly - higher CO ₂ emissions		
England & Wales	EU Directive 2002/91/EC	