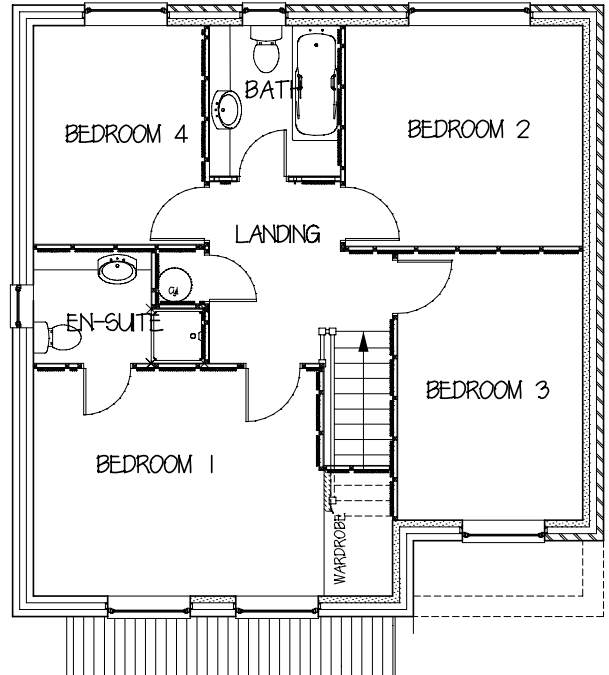
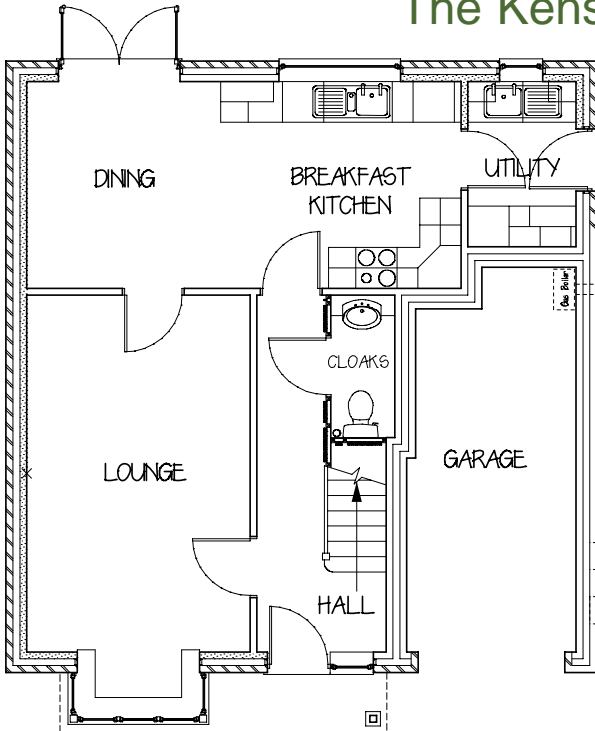




The Kensington Ka Plot 168



Lounge	3.20 x 5.20 plus bay 10'6" x 17'1"
Kitchen/ Dining	6.27 x 3.00 20'7" x 9'10"
Garage	2.46 x 5.66 max 8'1" x 18'7"

Bed 1	4'20" x 3.33 max plus w'robe 13'9" x 10'10"
Bed 2	3.43 x 3.22 11'3" x 10'7"
Bed 3	2.69 x 3.93 8'10" x 12'11"
Bed 4	2.46 x 3.20 8'1" x 10'5"

All dimensions approximate

