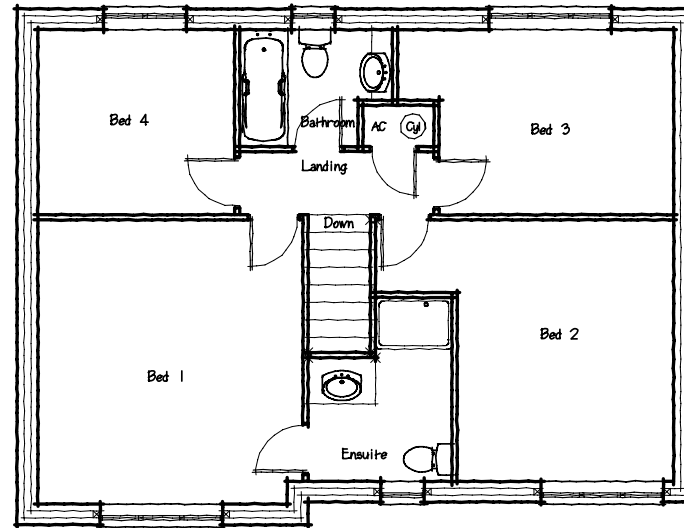
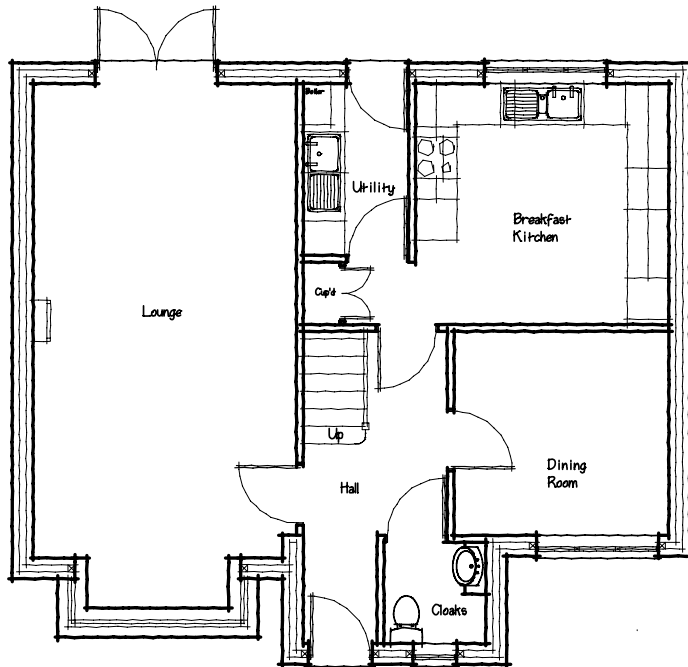






The Foxwood F2/3b Phase II - Plot 175



- Lounge 3.76 x 6.85 plus bay
12'4" x 22'6"
- Dining 3.06 x 2.91
10'0" x 9'6"
- Kitchen 3.61 x 3.46
11'10" x 11'4"
- Garage 5.25 x 5.48
17'2" x 18'0"
- Bed 1 3.83 x 4.11 max
12'7" x 13'6"
- Bed 2 3.20 x 3.78 min
10'6" x 12'5"
- Bed 3 3.97 x 2.66 max
13'0" x 8'9"
- Bed 4 2.82 x 2.66
9'3" x 8'9"

All dimensions approximate

| Energy Efficiency Rating | | Current | Potential |
|--|-------------------------|---|-----------|
| <i>Very energy efficient - lower running costs</i> | | | |
| (92-100) A | | | |
| (81-91) B | | | |
| (69-80) C | | 76 | 77 |
| (55-68) D | | | |
| (39-54) E | | | |
| (21-38) F | | | |
| (1-20) G | | | |
| <i>Not energy efficient - higher running costs</i> | | | |
| England & Wales | EU Directive 2002/91/EC |  | |

| Environmental (CO ₂) Impact Rating | | Current | Potential |
|---|-------------------------|---|-----------|
| <i>Very environmentally friendly - lower CO₂ emissions</i> | | | |
| (92-100) A | | | |
| (81-91) B | | | |
| (69-80) C | | 76 | 76 |
| (55-68) D | | | |
| (39-54) E | | | |
| (21-38) F | | | |
| (1-20) G | | | |
| <i>Not environmentally friendly - higher CO₂ emissions</i> | | | |
| England & Wales | EU Directive 2002/91/EC |  | |