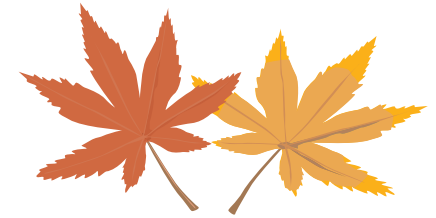
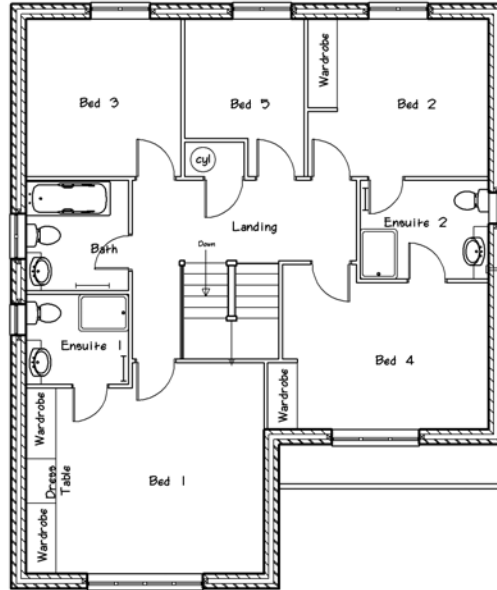
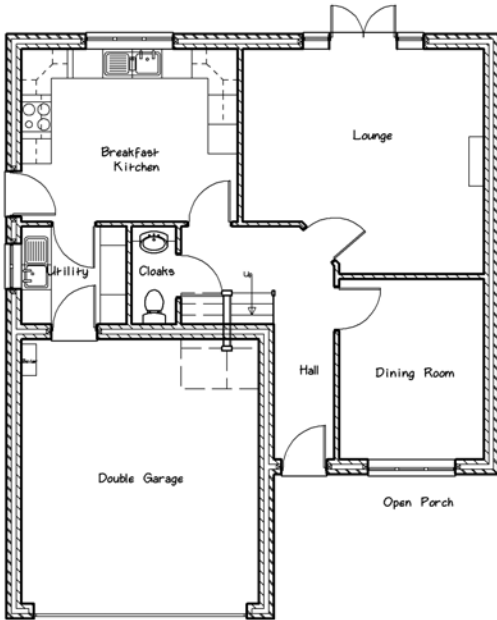


The Gateshead G4a



Gardener's Croft

Five luxury homes off Sandy Lane in Hucknall



- Dimensions
Approx sizes only.
- Lounge 4.82 x 4.47 Max
15'10" x 14'8"
 - Kitchen 4.32 x 3.45
14'2" x 11'4"
 - Dining Room 2.87 x 3.60
9'5" x 11'10"
 - Garage 4.80 x 5.37
15'9" x 17'7"
 - Bed 1 4.75 x 4.25 Max
15'7" x 13'11"
 - Bed 2 3.60 x 3.17
11'9" x 10'4"
 - Bed 3 3.0 x 3.17
9'10" x 10'5"
 - Bed 4 4.14 x 2.95
13'7" x 9'8"
 - Bed 5 2.39 x 3.17 Max
7'10" x 10'5"

Energy Efficiency Rating		
	Current	Potential
Very energy efficient - lower running costs		
(92-100) A		
(81-91) B		
(69-80) C	76	76
(55-68) D		
(39-54) E		
(21-38) F		
(1-20) G		
Not energy efficient - higher running costs		
England & Wales	EU Directive 2002/91/EC	

Environmental (CO ₂) Impact Rating		
	Current	Potential
Very environmentally friendly - lower CO ₂ emissions		
(92-100) A		
(81-91) B		
(69-80) C	76	76
(55-68) D		
(39-54) E		
(21-38) F		
(1-20) G		
Not environmentally friendly - higher CO ₂ emissions		
England & Wales	EU Directive 2002/91/EC	



www.Langridgethames.com Tel 0115 9626 626

As part of a policy of continual development the Company reserves the right to revise the plans and specifications without prior notice