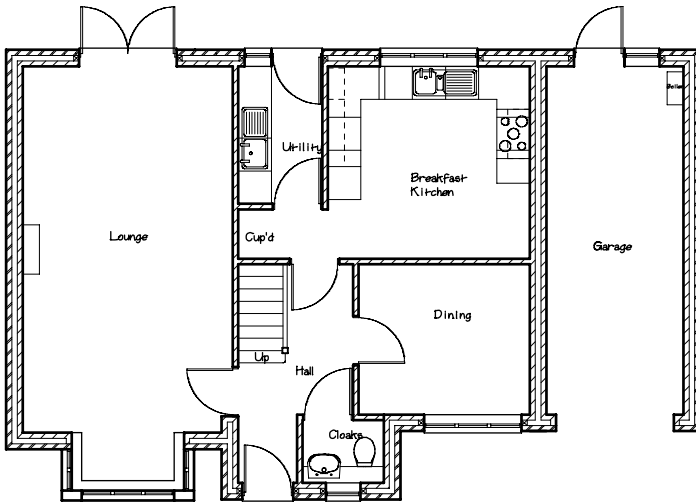
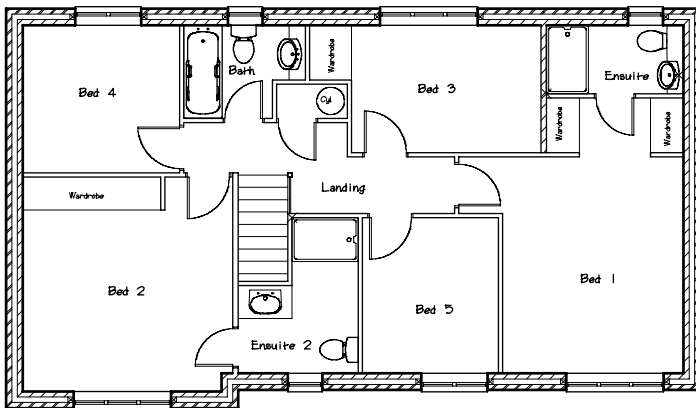


Plot 3 The Finsbury F9/2002 - £349,950



Lounge	3.76 x 6.63 plus bay 12'4" x 21'9"
Dining	3.06 x 2.69 10'0" x 8'10"
Kitchen	3.61 x 3.46 11'10" x 11'4"
Garage	2.49 x 6.35 8'2" x 20'10"

All dimensions approximate



Bed 1	3.25 x 3.92 ex w'robes 10'8" x 12'10"
Bed 2	3.78 x 3.88 inc w'robes 12'5" x 12'9"
Bed 3	3.54 x 2.30 ex w'robes 11'7" x 7'6"
Bed 4	2.82 x 2.66 9'3" x 8'6"
Bed 5	2.66 x 2.80 8'8" x 9'2"

