



A new development of luxury 2, 3, 4 & 5  
bed detached homes in a unique rural setting



Woodview

## The Turton T20 - Plot 48, 53 & 71



Picture shows a typical T20 - Turton

[www.langridgehomes.com](http://www.langridgehomes.com)

Tel: 0115 9626 626

[sales@langridgehomes.com](mailto:sales@langridgehomes.com)

As part of a policy of continual development the company reserves the right to revise the plans, specification and prices without prior notice



A new development of luxury 2, 3, 4 & 5 bed detached homes in a unique rural setting

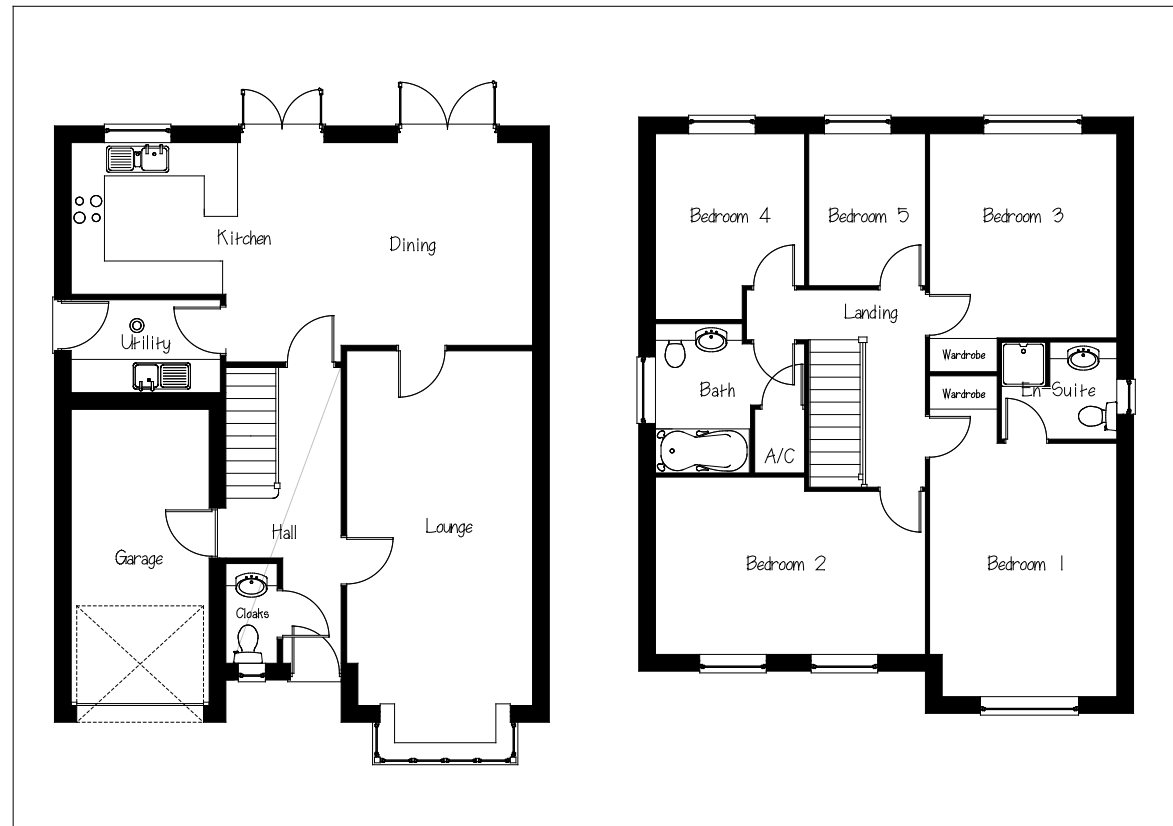


Woodview

## The Turton T20 - Plot 48, 53 & 71

Lounge	6.35 x 3.30 (ex bay) 20' 10" x 10' 10"
Kitchen / Dining	8.27 x 3.60 (max) 27' 1" x 11' 10"
Bed 1	4.54 x 3.35 (min) 14' 10" x 11' 0"
Bed 2	4.84 x 3.17 (max) 15' 10" x 10' 5"
Bed 3	3.66 x 3.35 (max) 12' 0" x 11' 0"
Bed 4	3.32 x 2.66 (max) 10' 9" x 8' 8"
Bed 5	2.71 x 2.10 8' 10" x 6' 10"

All dimensions are approximate



[www.langridgehomes.com](http://www.langridgehomes.com)

Tel: 0115 9626 626

[sales@langridgehomes.com](mailto:sales@langridgehomes.com)

As part of a policy of continual development the company reserves the right to revise the plans, specification and prices without prior notice