



Church Farm, Off Peasehill Road,
Ripley, Derbyshire, DE5 3TJ



Church Farm

The Kentwood K6a - Plot 58, 59 & 108



Picture shows a typical K6a - Kentwood

www.langridgehomes.com

Tel: 0115 9626 626

sales@langridgehomes.com

As part of a policy of continual development the company reserves the right to revise the plans, specification and prices without prior notice



Church Farm, Off Peasehill Road,
Ripley, Derbyshire, DE5 3TJ



Church Farm

The Kentwood K6a - Plot 58, 59 & 108

Lounge 3.10 x 5.20
10' 1" x 17' 0"

Kitchen /
Dining 8.70 x 3.00
28' 5" x 9' 8"

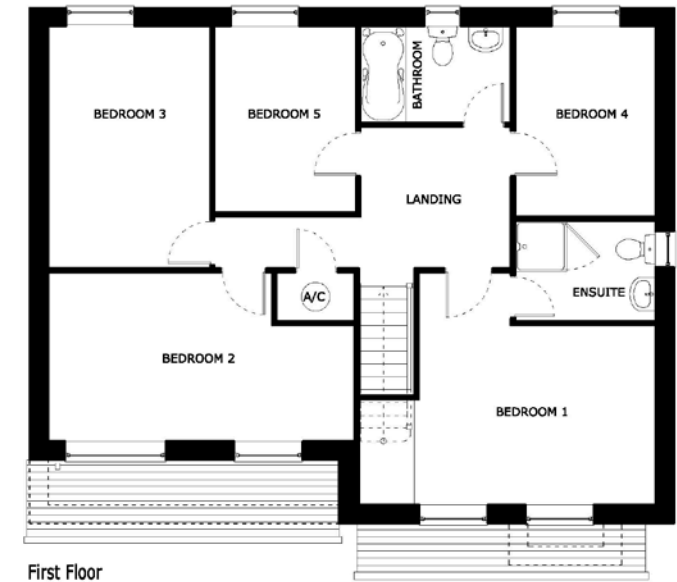
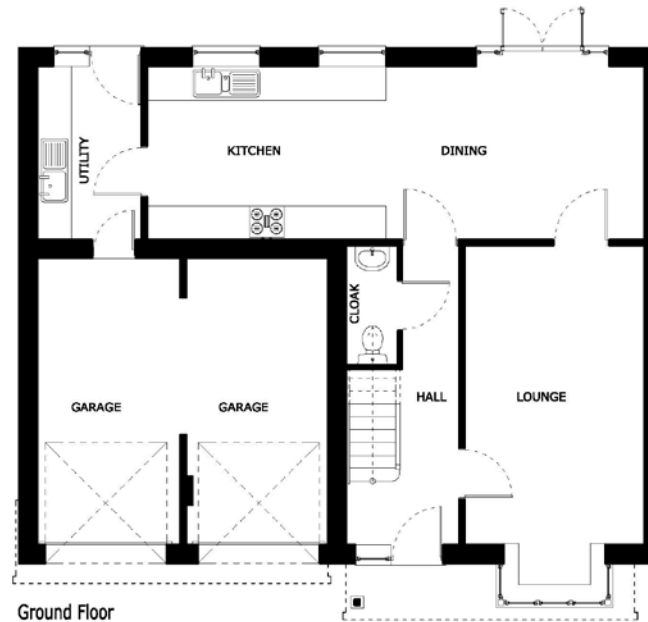
Bed 1 3.10 x 4.10
10' 17" x 13' 4"

Bed 2 5.30 x 4.00
17' 3" x 13' 1"

Bed 3 2.80 x 4.20
9' 1" x 13' 7"

Bed 4 3.30 x 2.40
10' 8" x 7' 8"

Bed 5 2.40 x 3.20
7' 8" x 10' 4"



All dimensions are approximate

Plan shows a typical K6a - Kentwood

www.langridgehomes.com

Tel: 0115 9626 626

sales@langridgehomes.com

As part of a policy of continual development the company reserves the right to revise the plans, specification and prices without prior notice