



A new development of luxury 3, 4 & 5  
bed detached homes in a unique rural setting



Woodview

## The Easton E20 - Plot 49



Picture shows a typical E20 - Easton

[www.langridgehomes.com](http://www.langridgehomes.com)

Tel: 0115 9626 626

[sales@langridgehomes.com](mailto:sales@langridgehomes.com)

As part of a policy of continual development the company reserves the right to revise the plans, specification and prices without prior notice



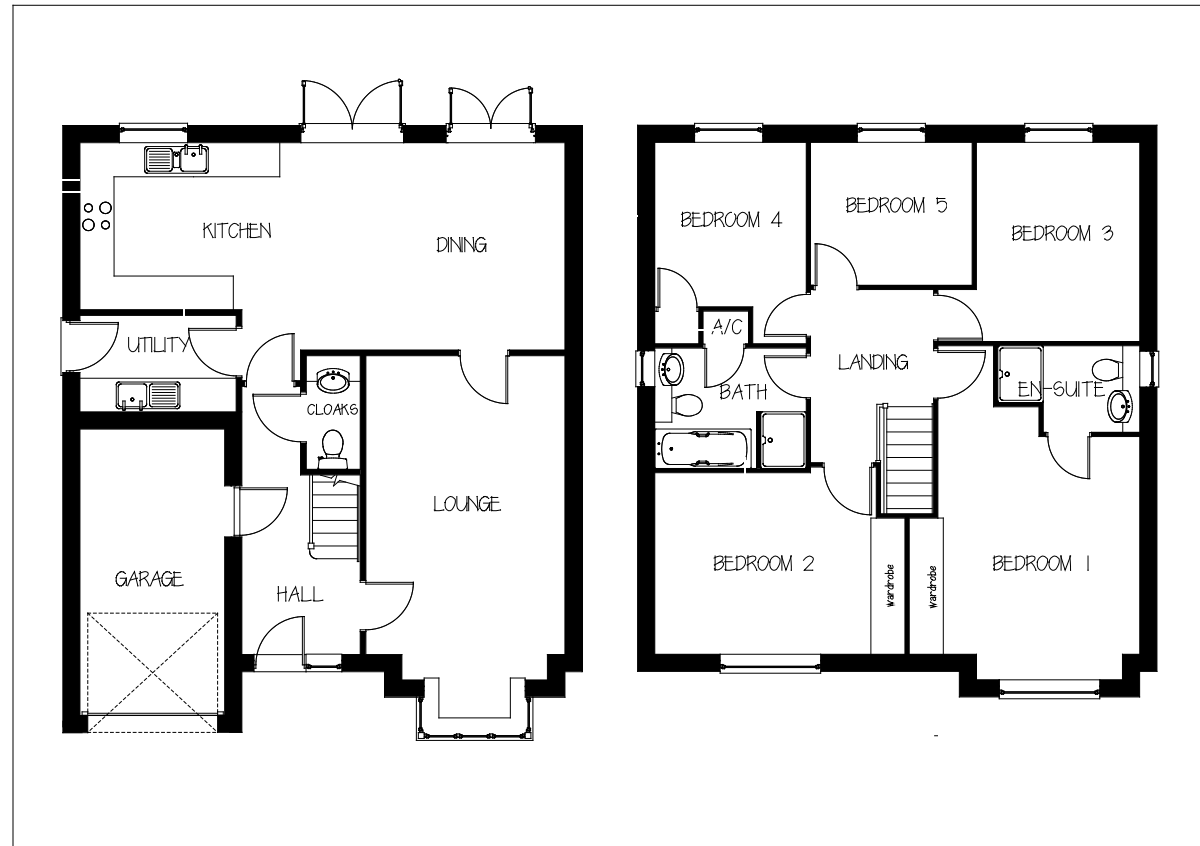
A new development of luxury 3, 4 & 5 bed detached homes in a unique rural setting



Woodview

## The Easton E20 - Plot 49

Lounge	3.45 x 5.20 (min) 11' 4" x 17' 1"
Kitchen / Dining	8.49 x 3.60 (max) 27' 10" x 11' 9"
Bed 1	3.50 x 3.81 (min) 11' 6" x 12' 6"
Bed 2	3.87 x 3.17 (min) 12' 8" x 10' 5"
Bed 3	2.85 x 3.48 (min) 9' 4" x 9' 5"
Bed 4	2.64 x 2.87 (min) 8' 8" x 9' 5"
Bed 5	2.82 x 2.49 (min) 9' 3" x 8' 2"



All dimensions are approximate

[www.langridgehomes.com](http://www.langridgehomes.com)

Tel: 0115 9626 626

[sales@langridgehomes.com](mailto:sales@langridgehomes.com)

As part of a policy of continual development the company reserves the right to revise the plans, specification and prices without prior notice