



A new development of luxury 3, 4 & 5
bed detached homes in a unique rural setting



Woodview

The Galaway G6 & G6a - Plot 43, 47 & 54



Picture shows a typical G6 or G6a - Galaway

www.langridgehomes.com

Tel: 0115 9626 626

sales@langridgehomes.com

As part of a policy of continual development the company reserves the right to revise the plans, specification and prices without prior notice



A new development of luxury 3, 4 & 5
bed detached homes in a unique rural setting



Woodview

The Galaway G6 & G6a - Plot 43, 47 & 54

Lounge 2.90 x 4.70
9' 5" x 15' 4"

Kitchen /
Dining 9.30 x 3.50
30' 5" x 11' 4"

Bed 1 4.80 x 3.60
15' 7" x 11' 8"

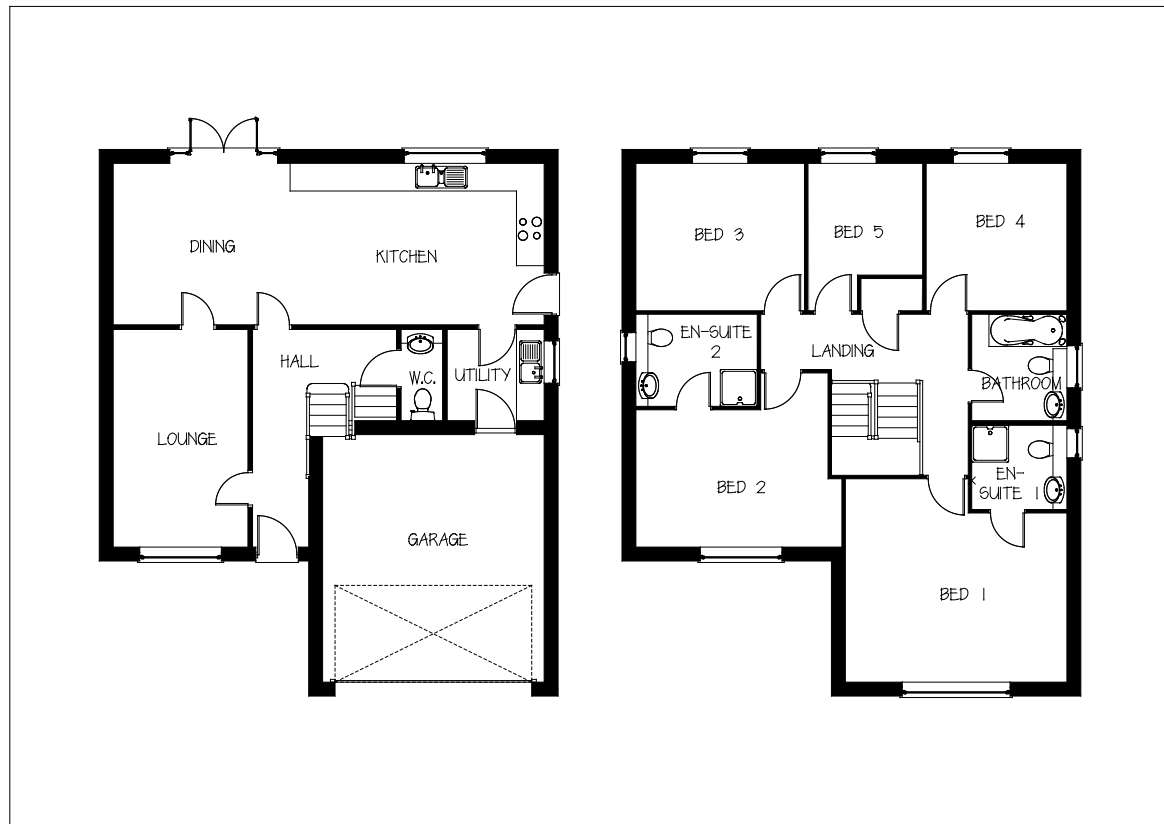
Bed 2 4.20 x 2.90
13' 7" x 9' 5"

Bed 3 3.20 x 3.60
10' 4" x 11' 8"

Bed 4 3.20 x 3.00
10' 4" x 9' 8"

Bed 5 2.40 x 2.40 (min)
7' 8" x 7' 8" (min)

All dimensions are approximate



www.langridgehomes.com

Tel: 0115 9626 626

sales@langridgehomes.com

As part of a policy of continual development the company reserves the right to revise the plans, specification and prices without prior notice