



A new development of luxury 3, 4 & 5
bed detached homes in a unique rural setting



Woodview

The Kentwood K6a - Plot 50



Picture shows a typical K6a - Kentwood

www.langridgehomes.com

Tel: 0115 9626 626

sales@langridgehomes.com

As part of a policy of continual development the company reserves the right to revise the plans, specification and prices without prior notice



A new development of luxury 3, 4 & 5 bed detached homes in a unique rural setting

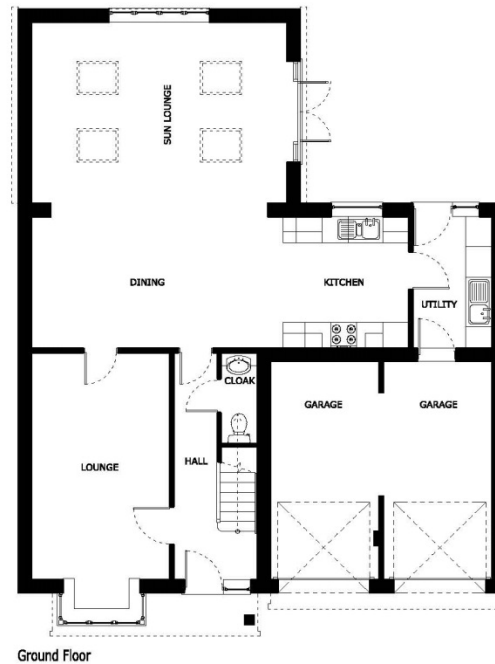


Woodview

The Kentwood K6a - Plot 50

Lounge	3.20 x 5.20 (plus bay) 10' 6" x 17' 1"
Kitchen / Dining Lounge	8.68 x 2.99 28' 6" x 9' 10" 4.20 x 5.90 13' 7" x 19' 3"
Bed 1	3.02 x 4.08 (min) 9' 11" x 13' 5"
Bed 2	4.12 x 3.32 (plus wardrobe) 13' 6" x 10' 11"
Bed 3	3.86 x 3.07 (max) 12' 8" x 10' 1"
Bed 4	2.46 x 3.20 8' 1" x 10' 6"
Bed 5	2.23 x 3.04 7' 3" x 10' 0"

All dimensions are approximate



www.langridgehomes.com

Tel: 0115 9626 626

sales@langridgehomes.com

As part of a policy of continual development the company reserves the right to revise the plans, specification and prices without prior notice