



A new development of luxury 3, 4 & 5
bed detached homes in a unique rural setting



Woodview

The Newbury N2 - Plot 52



Picture shows a typical N2 - Newbury

www.langridgehomes.com

Tel: 0115 9626 626

sales@langridgehomes.com

As part of a policy of continual development the company reserves the right to revise the plans, specification and prices without prior notice



A new development of luxury 3, 4 & 5 bed detached homes in a unique rural setting

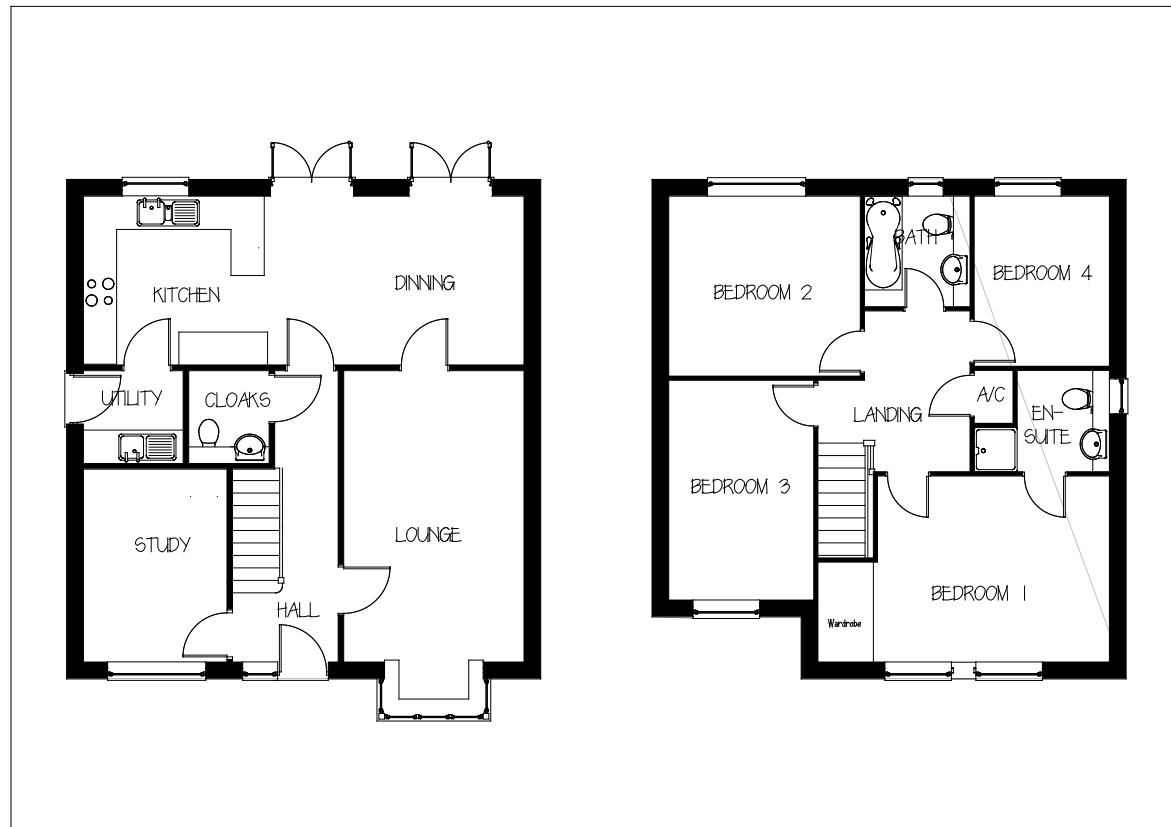


Woodview

The Newbury N2 - Plot 52

Lounge	5.20 x 3.20 (min) 17' 1" x 10' 6"
Kitchen / Dining Study	7.90 x 3.00 25' 11" x 9' 10" 3.43 x 2.54 (max) 11' 3" x 8' 4"
Bed 1	4.15 x 3.32 (min) 13' 7" x 10' 11"
Bed 2	3.42 x 3.22 11' 3" x 10' 7"
Bed 3	3.93 x 2.59 (max) 12' 11" x 8' 6"
Bed 4	3.04 x 2.41 10' 0" x 7' 11"

All dimensions are approximate



www.langridgehomes.com

Tel: 0115 9626 626

sales@langridgehomes.com

As part of a policy of continual development the company reserves the right to revise the plans, specification and prices without prior notice