



Westbury Gardens

Off Lortas Road, Basford, Nottingham, NG5 1EH

The Kingsford – KA2

Plots 12, 14, 16 & 19

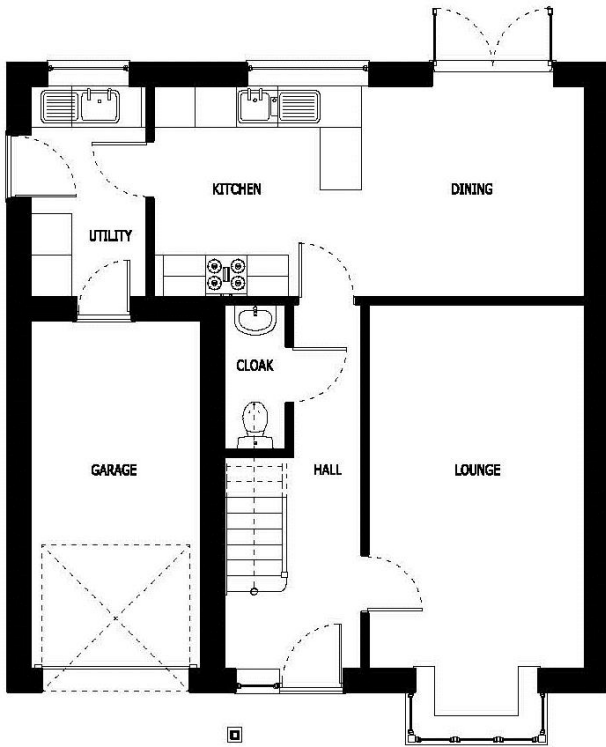


(Typical Front Elevation)

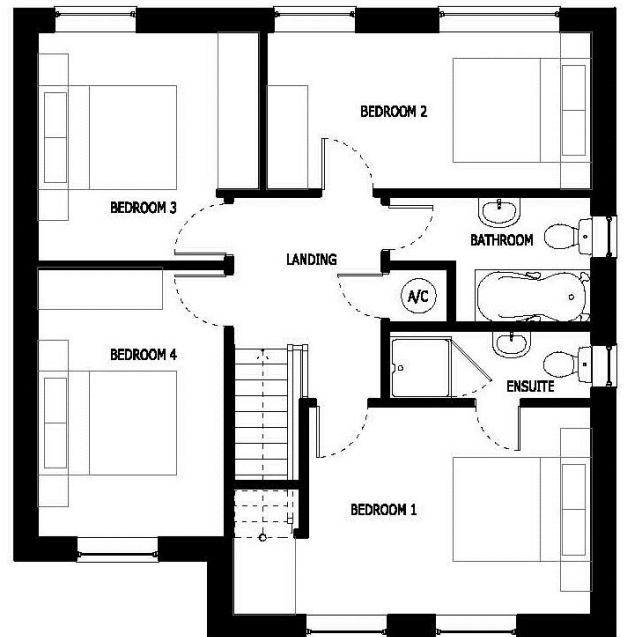


Westbury Gardens

Off Lortas Road, Basford, Nottingham, NG5 1EH



Ground Floor



First Floor

(Plan to be used for representation purposes only and all dimensions are approximate)

Lounge	3.10 x 5.20 10' 1" x 17' 0"
Kitchen/Dining	6.20 x 3.00 20' 3" x 9' 8"

Bed 1	4.10 x 3.00 13' 4" x 9' 8"
Bed 2	4.70 x 2.20 15' 4" x 7' 5"
Bed 3	3.20 x 3.30 10' 4" x 10' 8"
Bed 4	2.70 x 3.80 8' 8" x 12' 4"